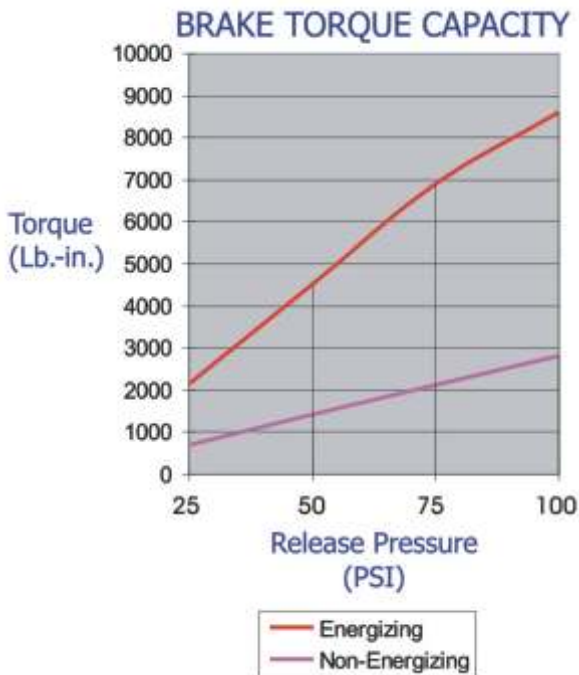
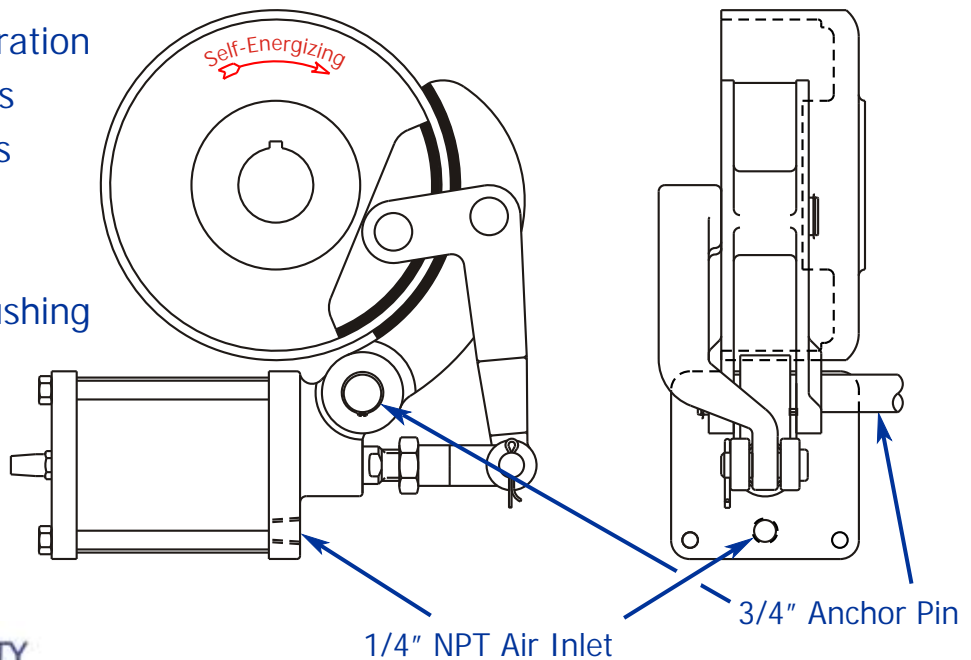




DRUM BRAKES - MODEL: DB7-3

Features:

- 7" Drum Diameter
- 3-1/4 inch Diameter Spring Chamber
- Spring Set / Air Release Operation
- Torque to 8600 Pound-Inches
- Woven, Non-Asbestos Linings
- 1/4 inch N.P.T. Inlet Port
- Standard Hub Machined for "SD" QD Style Taperlock Bushing
- Custom Bores to 2-1/4"
- Assembly Mounts on a 3/4 inch Anchor Pin



Additional Configuration Options

(1) Right & (1) Left Brake Assembly On Single Drum

Balanced Torque in Both Directions

$$T_{(cw)} \& T_{(ccw)} = T_{(energizing)} + T_{(non-energizing)}$$

Up to (2) Symmetrical Brake Assemblies On Single Drum

Increased Torque in One Direction

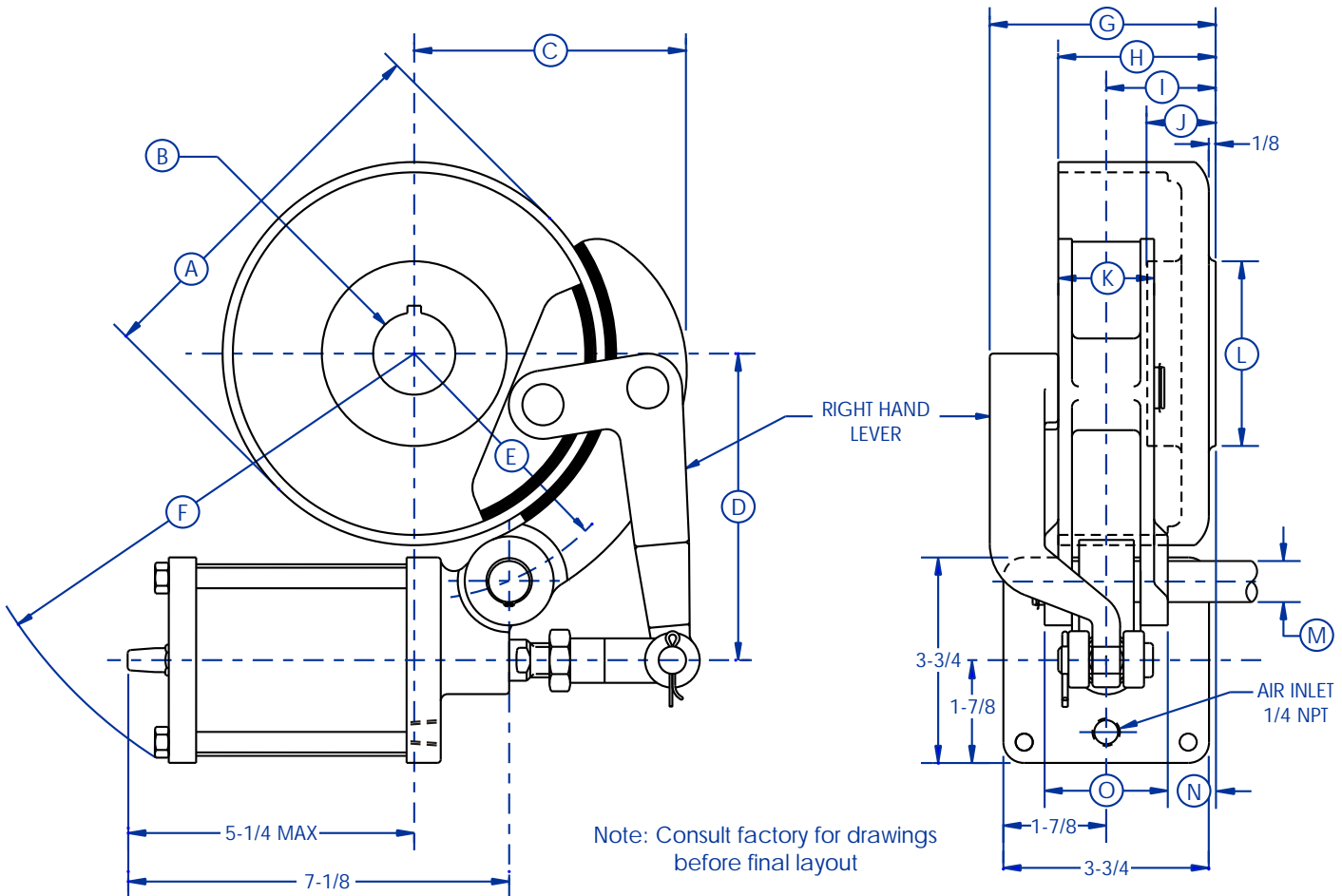
$$T_{(cw)} = 2 \times T_{(energizing)}$$

$$T_{(ccw)} = 2 \times T_{(non-energizing)}$$



DRUM BRAKES - MODEL: DB7-3*

* ADD LETTER "R" OR "L" TO BRAKE ASSEMBLY NUMBER TO INDICATE A RIGHT OR LEFT HAND BRAKE



DIMENSIONS

A	DRUM OUTSIDE DIAMETER	7
B	MAXIMUM SHAFT DIAMETER (SPECIAL BORE)	2-1/4
	MAXIMUM SHAFT DIAMETER (QD BUSHING)	2
	QD BUSHING SIZE	SD
C	CLEARANCE - CENTER OF DRUM TO OUTER SHOE	4-7/8
D	CENTER OF DRUM TO CENTER OF CYLINDER	5-7/16
E	CENTER OF DRUM TO CENTER OF ANCHOR PIN	4-1/2
F	MAXIMUM CLEARANCE FROM CENTER OF DRUM	8-3/4
G	WIDTH OVERALL	4
H	DRUM WIDTH	2-7/8
I	BACK OF DRUM TO CENTER OF BRAKE ASSEMBLY	2
J	LENGTH OF DRUM HUB	1-1/4
	LENGTH OF DRUM HUB WITH QD BUSHING	1-13/16
K	WIDTH OF BRAKE SHOES	1-3/4
L	DRUM HUB DIAMETER	3-3/8
M	ANCHOR PIN DIAMETER	3/4
N	BACK OF DRUM TO OUTER SHOE AT ANCHOR PIN	9/16
O	WIDTH OF BRAKE AT ANCHOR PIN	2-1/4