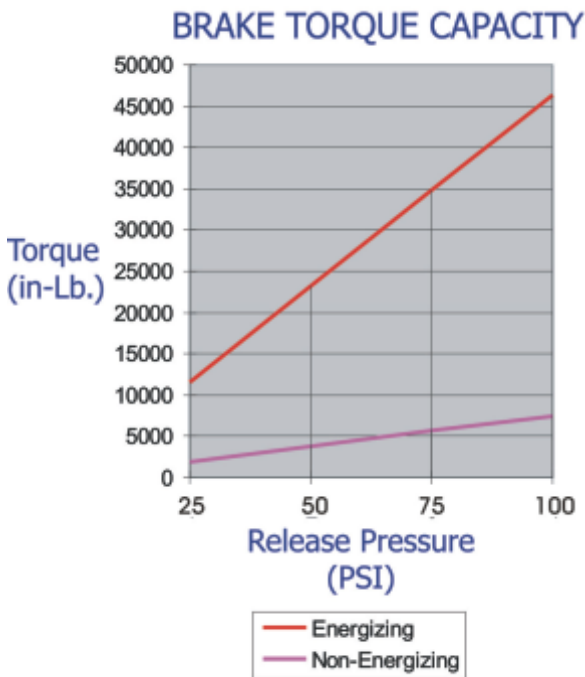
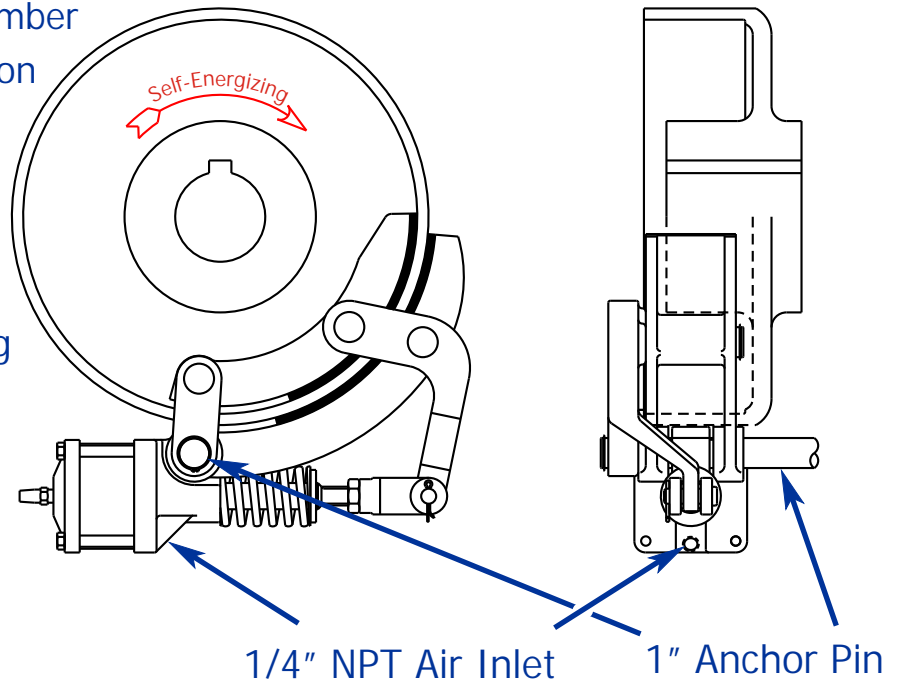




## DRUM BRAKES - MODEL: DB14-3

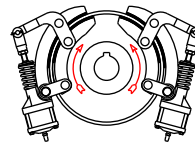
### Features:

- 14" Drum Diameter
- 3-1/4 inch Diameter Spring Chamber
- Spring Set / Air Release Operation
- Torque to 46,300 Pound-Inches
- Woven, Non-Asbestos Linings
- 1/4 inch N.P.T. Inlet Port
- Standard Hub Machined for "E" QD Style Taperlock Bushing
- Custom Bores to 5-3/4"
- Assembly Mounts on a 1 inch Anchor Pin



### Additional Configuration Options

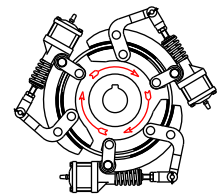
(1) Right & (1) Left Brake Assembly On Single Drum



Balanced Torque in Both Directions

$$T_{(cw)} \text{ \& } T_{(ccw)} = T_{(energizing)} + T_{(non-energizing)}$$

Up To (3) Symmetrical Brake Assemblies On Single Drum



Increased Torque in One Direction

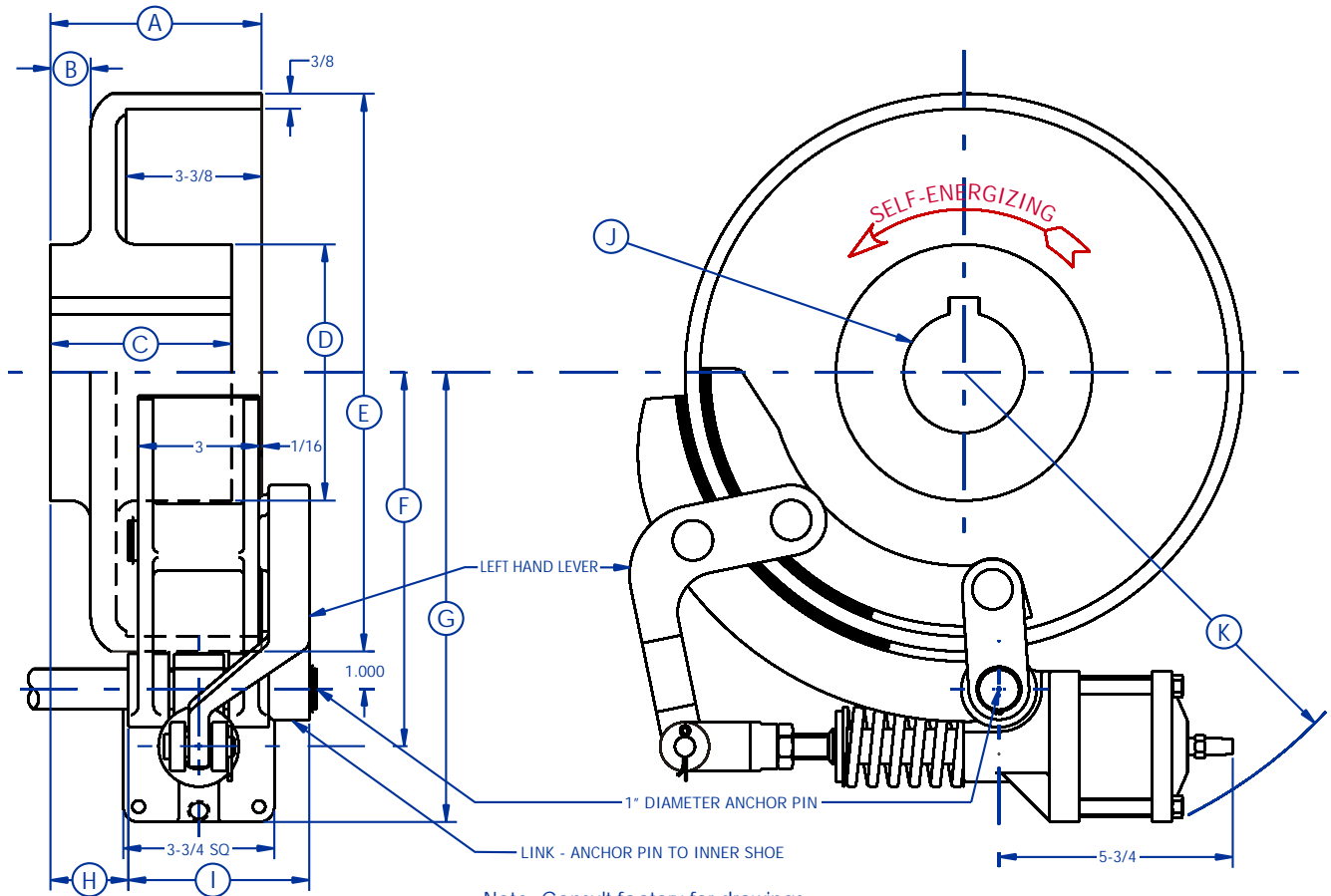
$$T_{(cw)} = 3 \times T_{(energizing)}$$

$$T_{(ccw)} = 3 \times T_{(non-energizing)}$$



## DRUM BRAKES - MODEL: DB14-3\*

\* ADD LETTER "R" OR "L" TO BRAKE ASSEMBLY NUMBER TO INDICATE A RIGHT OR LEFT HAND BRAKE



Note: Consult factory for drawings before final layout

## DIMENSIONS

	BRAKE DRUM HUB		
	SMALL	LARGE	
A	BACK OF DRUM HUB TO OPEN END OF DRUM (MAX)	5-1/4	4-3/4
	(MIN)	4-3/8	4-3/8
B	MACHINE FRAME TO BACK OF DRUM (MAX)	1	1/2
	(MIN)	1/8	1/8
C	MAXIMUM HUB LENGTH	5-1/4	6-1/4
D	DRUM HUB DIAMETER	6-3/8	8-1/2
E	OUTSIDE DIAMETER OF DRUM	13-7/8	
F	CENTER OF DRUM TO CENTERLINE OF CYLINDER	9-3/8	
G	MINIMUM CLEARANCE FROM CENTER OF DRUM	11-1/4	
H	BACK OF DRUM TO OUTER SHOE AT ANCHOR PIN (MAX)	2	1-1/2
	(MIN)	1-1/8	1-1/8
I	WIDTH OF BRAKE AT ANCHOR PIN	4-1/2	
J	MAXIMUM SHAFT DIAMETER (SPECIAL BORE)	4-1/2	5-3/4
	(WITH QD BUSHING)	2-3/4	
	QD BUSHING SIZE	E	
K	MAXIMUM CLEARANCE FROM CENTER OF DRUM	12-1/2	